



INSTALLATION GUIDE

Houses * Granny Flats * Awnings * Factories * Sheds

It is important to check and comply with your Local Government Authority requirements before installation. It is the builder's responsibility to ensure any existing structure is adequately reinforced to accommodate any additional loads imposed by installing a Spacemaker insulated roof.

This document is to be used as a guide for the installation of Versiclad's Spacemaker insulated panels. All installation methods should be done in accordance with Versiclad's engineering documents and comply with all relevant codes and regulations.

GENERAL INFORMATION

Spacemaker insulated roof panels should be installed with a minimum fall of 1 degree (1:60).

Spacemaker insulated roof panels should always have the roof pans turned up to full rib height at the top end of the panel and turned down approx 20mm into the gutter.

When installing your new **Spacemaker** insulated roof to an existing dwelling, ensure considerations have been made to allow for additional water run-off.

It is recommended to wear gloves when handling **Spacemaker** insulated roof panels.

TOOLS REQUIRED

- Cordless Drill with appropriate attachments
- Circular Saw with Metal cutting blade
- Padded Work Platform to protect panels from damage (e.g. cover a pair of trestles with some material or foam)
- Soft Material / Blankets to cover beam for panel protection
- Turn Up / Turn Down Tool
- Rivet Gun
- Tape Measure
- Tin Snips
- Hammer
- Paint Scraper
- Gloves
- Safety Glasses
- Ear Plugs

INSTALLATION GUIDE

Prior to construction you should formulate a panel layout plan. This will help determine whether any panels will require cutting

1

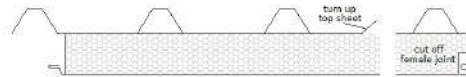
Carefully LIFT the first panel onto the padded work platform with the ceiling facing upwards. Remove the polystyrene from the gutter cutback using the paint scraper, then turn the panel over



2

Spacemaker panels should be laid from right to left (if possible). If the panel width requires cutting ensure you are cutting off the female joint and leave the male joint intact, refer to your panel layout plan before cutting

Turn up the edge of the top skin



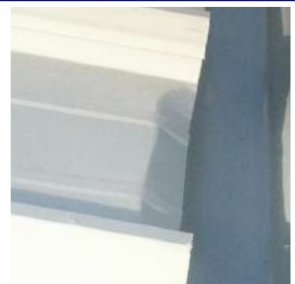
3

Turn up all roof pans at the top end of the panel using the turn up tool



4

Turn down all the roof pans at the gutter end using the turn down tool



5

Place a soft cover over the top of the support beam(s) or wall plate(s) where the first panel will be installed to avoid damaging the panel surface

INSTALLATION GUIDE

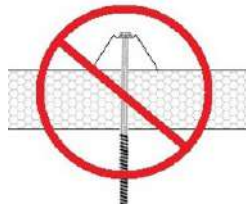
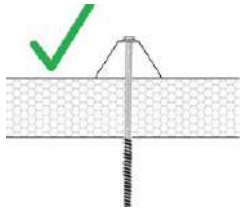
6

Lift the panel into place ensuring the gutter / cut back end is positioned at the lower end of the building and the female / cut edge of the panel is positioned out over the eave. Square off the first panel and ensure the correct eave overhang measurements are achieved



7

Prior to fixing the panel, move the soft covers along the support beam(s) or wall plate(s) to where the next panel will be installed to avoid panel damage. Secure the panel to the supporting beam(s) or wall(s) by screwing through every rib with 14g Hex head screws as per engineering details starting at the elevated end



Do not over tighten the screws. The screw head and neo washer should engage with the sheet rib, the sheet rib should not buckle



8

Prepare the remaining panels as per steps 1,3 and 4



9

To install the second panel, position the panel into place and slide into the previously installed panel engaging the male and female joint. The ceiling connections should be neat with a consistent join line. Fix panels in place following step 7, ensure panels are held tight together whilst fixing to maintain the neat consistent join line



Note: Panels should interlock with general ease, if you have any concerns/difficulties connecting the panels call your local sales representative immediately before proceeding



10

Using 10g Hex Head stitching screws secure the overlap of the top skin with a maximum 900mm centres as per engineering details



Spacemaker

INSTALLATION GUIDE

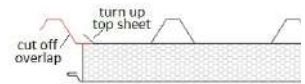
11

Install remaining panels following steps 7-10



12

If your last panel requires cutting follow steps 1-4 ensuring to cut off the opposite side you previously cut in step 2 otherwise trim off the excess (male) overlap and turn up the cut edge of the top sheet



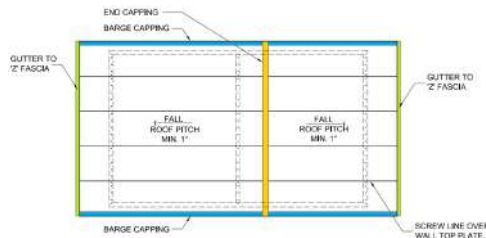
13

After all panels are fitted install flashings, gutter, downpipe etc.

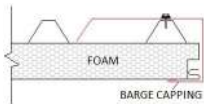


REFER TO SPACEMAKER ENGINEERING FOR COMPLETE FIXING DETAILS

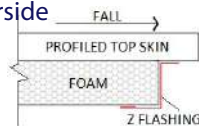
FLASHING DETAILS



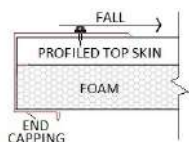
BARGE CAPPING - fixed with stitching screws @ 400mm centres topside, blind rivets @ 400mm centres underside



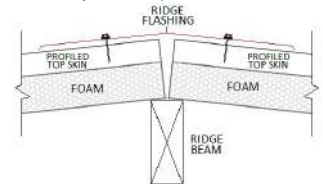
Z FLASHING - *fixed with blind rivets @ max 999mm centres (every 3rd rib) top sheet, blind rivets @ max 900mm centres underside



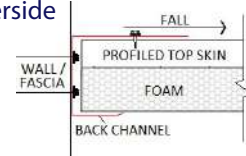
END CAPPING - fixed with stitching screws @ max 333mm centres (every rib) to topside, blind rivets @ 400mm centres to underside



RIDGE CAPPING - fixed with stitching screws every rib topside



BACK CHANNEL - *roof panel fixed to Back Channel using stitching screws @ max 999mm centres (every 3rd rib) topside, blind rivets @ max 900mm centres underside



**non cyclonic regions only, see complete engineering for fixing details in cyclonic regions*